



4810-93 Street, Edmonton, Alberta T6E 5M4
 Phone: (780) 469-2401 Fax: (780) 468-2422

Report No: JC000207

| | | | | | |
|------------------------|--|-------------------------|-------------------|-----------|--|
| Client | Harvest Operations Corporation | Inspection Date | Feb 24, 2009 | | |
| Prov. Reg. # | AB 3043042 | Inspection Type | INV / VE | | |
| Equipment Type | Contactora | Location | Tweedie | | |
| Tag/Equip. | | LSD | AB 07-15-070-13W4 | | |
| Status | Not in Service | Downhole LSD | | | |
| Manufacturer | PROPAK SYSTEMS LTD | Area | | | |
| Serial Number | 94033-AA | Year Built | 1994 | | |
| CRN # | M2693.2 | Service | Sweet | | |
| Comp/Unit Id | | Manway | None | | |
| Nat.Board # | | Coating | | | |
| Interim Insp'n | | Interim Type | | | |
| Next Inspection | 9999 | Next Insp Type | INV | | |
| Length | | Height | | | |
| Volume | | Client Reference | | | |
| Owner | Harvest Operations Corporation | RT | | HT | |
| Foreman | | RAE Job No. | 09-0095 | | |
| ABSA | Plant: H Vessel: K Process: G Special: B | ASME | Sec. VIII div. 1 | | |
| History Log | AB-10 submitted July 6, 2009 - Vessel NIS | | | | |

| | | | | | |
|----------------------------|---------------------|---------------------------|-------------|---------------------|--|
| Component | Vessel Shell | | | | |
| MAWP | 1400.0 PSI @ 151 °F | | MDMT | -20 °F @ 1400.0 PSI | |
| Material | | Material Thickness | 1 in | | |
| Diameter | 24 in | Length | | | |
| Corrosion Allowance | | | | | |

| | | | | | |
|----------------------------|--------------|---------------------------|----------|--|--|
| Component | Vessel Heads | | | | |
| Material | | Material Thickness | 0.957 in | | |
| Corrosion Allowance | | | | | |



Comments

The vessel was located at LSD:07-15-70-13W4

This vessel was out of service at time of inspection.

ABSA ESR Not in REMS.

Building Observations

The building was generally in good condition and well supported. The checker plate steel floor was clean and in good condition. The building was well lit. The door's and windows functioned well and were in good condition. The cladding was generally in good condition with small dents throughout. There were no combustibles in the building. There was generally good access to the equipment in the building.

Piping Observations

The attached piping was generally in good condition. The piping was sufficiently supported. There was no damage, distortion or stress evident on the piping. The piping was not insulated. The piping was painted and the paint was generally in good condition. There was scattered external corrosion on the piping surfaces. The main piping had flanged connections and showed no signs of leakage. The pipe flanges and bolting appeared to be in good condition. The flanged connections were fully bolted. The drain lines and instrumentation tubing had threaded connections, and showed no signs of leakage. The threaded piping was used for the drain lines and was all 2" or under.

PSV Observations

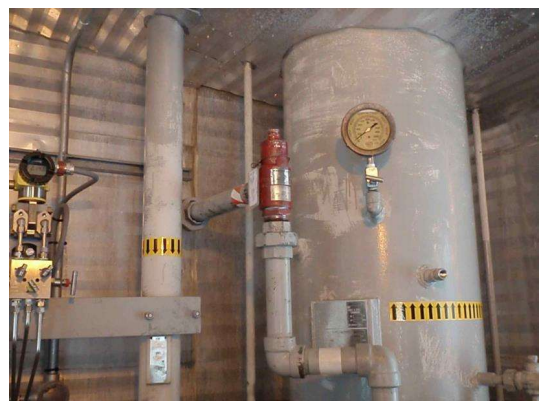
The PSV was located on associated piping within the building. The PSV was securely attached to the piping and in good condition. The nameplate was securely attached and legible. The set pressure was acceptable for the vessel. The service tag was securely attached. The PSV seal wire was attached and intact. The vent size was adequate and vent lines were positioned safely. The outlet piping provided positive drainage for the PSV. There were no valves on the PSV piping. The PSV was mounted in the vertical position. The PSV service reports have not been reviewed at this time, however there are no concerns that would cause the service interval to be reduced. The PSV service date was: 04/02/2007

Figure: 1



PSV nameplate General Overview

Figure: 2



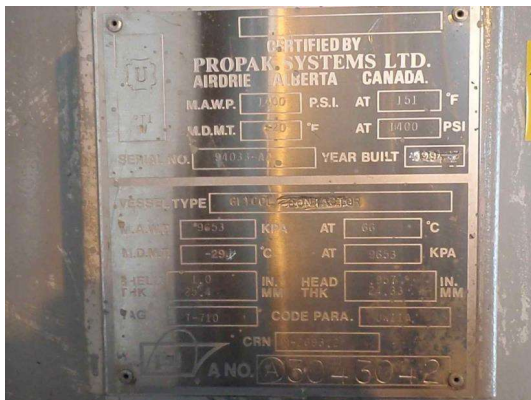
PSV General Overview



External Observations

The vessel was located inside a building. The nameplate was legible and securely mounted to the vessel. The vessel was identified per A-number and serial number stamped on the nameplate of the vessel. The heads, shell, nozzles and bolting appeared to be in good condition. There was no stress evident on piping or nozzle connections. There was no damage or distortion evident on the vessel surface. The vessel was not insulated. The vessel was painted and the paint was generally in good condition. There was scattered external corrosion visible on the vessel surfaces. The gauges were in good condition. There were no structural attachments fixed to the vessel. The vessel was vertical and mounted on a skirt that was bolted to the floor. One of the support Bolts on the skirt was not fastened tightly. The vessel was adequately supported. The vessel protrudes through the roof and the through roof seal was broken. There was no access ladder to the top of the contactor.

Figure: 3



Vessel Nameplate General Overview

Figure: 4



Bottom of Vessel General Overview

Figure: 5



Top of Vessel General Overview

Figure: 6



Support Bolt not fastened.

Internal Observations

No internal inspection was performed at this time.



4810-93 Street, Edmonton, Alberta T6E 5M4
Phone: (780) 469-2401 Fax: (780) 468-2422

Report No: JC000207

UT1 Observations

No UT was done on this vessel. Inventory Only.

Recommendations

1. Inspect this vessel Prior to being placed into service.



Jason Caron
INSPECTOR
API 510 # 33433



Trevor Paananen
IBPV INSPECTOR
BSA Certificate # 167

Inspector: Jason Caron

Reviewed By: Trevor Paananen